



1111. 1960's

PROGRAM

- Rev. John Turner Invocation
Rector, Church of the Advent Episcopal, Birmingham
- Richard A. Groenendyke, P.E. . . . Introduction of Distinguished Guest
Toastmaster
- Walter D. McCrary Address of Welcome
Chairman - Engineering Council
- Belton Cooper, P.E. Engineer's Week
National Chairman Engineer's Week
- Dr. John M. Gallalee Registered Engineer
Chairman - Alabama Board of Registration
- Robert E. Williams Introduction of Dr. Draughon
Auburn University - '32 B.S. Elec.
- Dr. Ralph B. Draughn Remarks
President - Auburn University
- S. D. Moxley, P.E. Introduction of Dr. Rose
University of Alabama - '21-'22 B.S.-M.S. Mech.
- Dr. Frank Rose Address
President - University of Alabama

DANCING - TERRACE BALLROOM

GUEST SPEAKERS



DR. FRANK A. ROSE

President, University of Alabama. Transylvania College, A.B.; Transylvania Seminary, B.D.; University of Cincinnati, L.L.D.; University of Alabama, L.T.T.D.; President Transylvania College, 1951-5. One of ten outstanding young men of the United States, 1955; one of founders and trustee, American College Fund; Board of Control, Southern Region Education Board; Trustee, American Universities Field Staff Program; Board of Directors, Alabama Education Television, Board of Trustees, Henry Clay Memorial Foundation; Member of: Newcomen Society of England, American Association of Colleges.



Stephen D. Moxley,

University of Alabama, 1921, B.S. in M.E.; 1922, M.S. in M.E. President, American Cast Iron Pipe Company, 1955--; Past Chairman and Regional Vice President of American Society of Mechanical Engineers, Past President Engineers Club of Birmingham, Member of: Newcomen Society of England, Birmingham Chamber of Commerce Birmingham Industrial Water Committee.

DR. RALPH B. DRAUGHON

President, Auburn University. Alabama Polytechnic Institute, 1922, B.S.; 1929, M.S.; Birmingham Southern College 1948, L.L.D. Member of: American Academy of Political and Social Science, Commission on Higher Education, Alabama Education Association, National Education Association, Alabama Historical Association, Alabama Academy of Sciences, Southern Association of Colleges and Secondary Schools.



Robert E. Williams, Jr.,

Auburn University, 1932, B.S. in M.E.; Area Sales Manager, Westinghouse Electric Corporation. Member of: American Institute of Electrical Engineers, American Society of Mechanical Engineers, Treasurer, Tau Beta Pi.

NATIONAL ENGINEERS WEEK . . .

This is National Engineers Week – A salute by our nation to the members of one of its largest professions. Each year since 1951 the National Society of Professional Engineers in cooperation with industry, schools, and other engineering societies conducts special programs to bring to the public a recognition of the vital functions of engineers in our civilian and defense economy.

The theme of the celebration for 1960 is "Engineering's Great Challenge – The 1960's". What will the 1960's bring? In science and technology the next decade will be a busy one with activities ranging from the exploration of space to medical research. Engineering research and development will open a whole new way of life for all of us.

Each year this observance has had a tribute from the President of the United States, and the event has been recognized in proclamations by state governors and municipal officials. The objectives of the annual observance center around efforts to stimulate a greater understanding of the contributions of the engineering profession and to emphasize the importance of safeguarding America's future with progress in science and technology.

It is significant that in our drive to establish unity of our profession that this affair is attended by all branches of engineers who are serving as consulting engineers in private practice, engineers in industry, education, and government service.

M E N U

Assorted Olives

Relishes

Fruit Cocktail

Breast of Chicken Elise

Au Gratin Potatoes

Mixed Green Vegetables

Tossed Salad, Tutwiler Dressing

Apple Pie

Hot Rolls

Coffee

**ENGINEERING COUNCIL DINNER
FEBRUARY 26, 1960**



DR. JOHN M. GALLALEE

Chairman, Alabama State Board of Registration for Professional Engineers and Land Surveyors. University of Virginia, 1911, M.E.; University of Alabama, 1938, D.Sc., 1948 L.L.D.; Professor Mechanical Engineering, University of Alabama, 1912-47, President of University of Alabama, 1947-53; President Emeritus, 1953-; Member of Engineers Club of Birmingham, Alabama Historical Association, Newcomen Society of England.



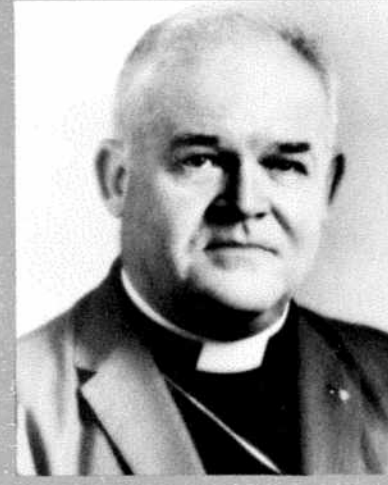
BELTON Y. COOPER, P.E.

National Chairman of Engineers' Week. Attended Severn School in Maryland and the Virginia Military Institute, B.S. in Naval Architecture and Marine Engineering from University of Michigan. Member of National Society of Professional Engineers (past Vice President); Alabama Society of Professional Engineers, past President, American Society of Tool Engineers; American Ordnance Association; The American Foundrymen's Society; The Society of Naval Architects and Marine Engineers.



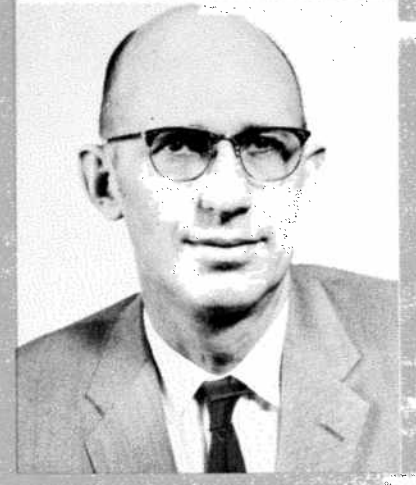
R. A. GROENENDYKE, P.E.

University of Alabama, 1935, B.S. in M.E., Engineer, TCI Div. U.S. Steel Corp. Member of American Institute of Mining, Metallurgical & Petroleum Engineers, Alabama Society of Professional Engineers, President Engineers Club of Birmingham. 1957-58 Chairman, Publication Committee "Alabama Engineer", 1959; Toastmaster International.



REV. JOHN TURNER

Rector, The Episcopal Church of the Advent. The Citadel, Furman University and the University of the South at Swanee, Tennessee. Former Chaplain of the City of Birmingham; former president of the Birmingham Ministerial Association. Active in Community Chest, T.B. Association, Red Cross Drives. Is one of the most prominent Episcopal Clergymen in Alabama and the nation.



WALTER D. McCRARY

Chairman, Engineering Council of Birmingham and Jefferson County. University of Alabama, B.S. in M.E. Engineer for Alabama By-Products Corporation. Past President of the Birmingham Section, Instrument Society of America; President, Engineers Club of Birmingham; member Citizen's Supervisory Committee; member American Academy for The Advancement of Science.

DISTINGUISHED GUESTS

Dr. C. E. Abernathy
Birmingham Southern College
Mrs. C. E. Abernathy

Dr. J. E. Bryan
Chamber of Commerce
Mrs. J. E. Bryan

Mr. L. S. Chabot
Dinner Committee
Mrs. L. S. Chabot

Dean J. R. Cudworth
University of Alabama, College of Engineering
Mrs. J. R. Cudworth

Mr. L. Dumas
Alabama State Legislature
Mrs. L. Dumas

Mr. H. N. Henry
Alabama Power Company
Mrs. H. N. Henry

Mr. R. W. Holman
Tennessee Coal & Iron Division
Mrs. R. W. Holman

Mr. W. D. Kendrick
Jefferson County Commission

Mr. F. G. Koenig, Jr.
Alabama By-Products Corporation
Mrs. F. G. Koenig, Jr.

Dr. W. M. Murray, Jr.
Southern Research Institute
Mrs. W. M. Murray, Jr.

Mr. W. F. O'Neal
Hayes Aircraft Corporation
Mrs. W. F. O'Neal

Dean F. H. Pumphrey
Auburn University, College of Engineering
Mrs. F. H. Pumphrey

Mr. Reid Sims
Stockham Valves & Fittings Company
Mrs. Reid Sims

Mr. J. E. Urquhart
Woodward Iron Company
Mrs. J. E. Urquhart

Mr. J. T. Waggoner
Birmingham City Commission
Mrs. J. T. Waggoner

Mr. Warren Whitney
James B. Clow & Sons

Dr. Leslie Wright
Howard College
Mrs. Leslie Wright

ENGINEERING COUNCIL OF BIRMINGHAM AND JEFFERSON COUNTY

WALTER D. McCRARY, *Chairman*
 GEORGE H. HOFFMAN, *Vice Chairman*
 JOHN P. McLARTY, *Executive Secretary*
 R. A. GROENENDYKE, *Ex-officio*



AMERICAN SOCIETY OF MECHANICAL ENGINEERS:

Lawrence Brownlee Chairman
 Erskine Vandegrift, Jr. Past Chairman



AMERICAN SOCIETY FOR METALS:

E. A. Brandler Chairman
 William C. Mayer Past Chairman



AMERICAN INSTITUTE OF INDUSTRIAL ENGINEERS:

William B. Speir President
 James M. Goodson, Jr. Past President



AMERICAN CHEMICAL SOCIETY:

Dr. Kenneth M. Gordon Chairman
 Dr. William J. Barrett Past Chairman



AMERICAN FOUNDRYMEN'S SOCIETY:

J. R. Cardwell Chairman
 Maurice D. Neptune Past Chairman



AMERICAN SOCIETY OF TOOL ENGINEERS:

Richard Weisheit Chairman
 W. R. Gillies Past Chairman



AMERICAN SOCIETY OF HEATING, REFRIGERATION & AIR CONDITIONING ENGINEERS:

Frank L. Hardy Chairman
 James C. Malone Past Chairman



AMERICAN WELDING SOCIETY:

R. A. Davis Chairman
 E. H. Turnock Past Chairman



INSTRUMENT SOCIETY OF AMERICA:

George S. Edwards President
 A. L. Thomas, Jr. Past President



AMERICAN SOCIETY OF PROFESSIONAL ENGINEERS:

William B. Sanford President
 Leonard S. Woody Past President



AMERICAN SOCIETY OF ELECTRICAL ENGINEERS:

Warren C. Turner Chairman
 George H. Hoffman Past Chairman



AMERICAN SOCIETY OF SAFETY ENGINEERS:

Eric Collier Chairman
 Stanford H. Downey Past Chairman



AMERICAN INSTITUTE OF MINING, METALLURGICAL & PETROLEUM ENGINEERS:

L. S. Chabot Secretary-Treasurer*
 James A. Hagy Proxy



ASSOCIATION OF IRON AND STEEL ENGINEERS:

John R. Hunt Chairman
 R. W. Holman Vice Chairman



AMERICAN SOCIETY OF CIVIL ENGINEERS:

R. O. Davis Chairman
 Raymond E. Strickland Past Chairman



AMERICAN SOCIETY OF AGRICULTURAL ENGINEERS:

M. B. Penn Proxy
 S. H. Booker Proxy



NATIONAL ASSOCIATION OF CORROSION ENGINEERS:

John Paisley President
 Ralph M. Cunningham Past President



AMERICAN INSTITUTE OF CHEMISTS:

Dr. C. E. Feazel Past Chairman
 Oscar L. Hurtt Secretary



AMERICAN INSTITUTE OF ARCHITECTS:

John M. Fuller
 Raymond E. Strickland



ENGINEERS CLUB OF BIRMINGHAM, INC.:

Walter D. McCrary, President
 R. A. Groenendyke, Past President
 John McLarty, Executive Secretary
 Council
 Inez Fuqua, Executive Secretary

*The Chairman or Past Chairman lives out of Jefferson County.

Co-Chairmen:

Leonard S. Woody, ASPE
L. S. Chabot, AIME

Program:

Carl Farlow, AISE
R. A. Groenendyke, ECofB

Printing and Administrative:

Erskine Vandegrift, Jr., ASME

Public Relations – Tickets:

George H. Hoffman, AIEE

Finances and Budget:

Maurice Neptune, AFS

Hotel Arrangements:

William J. Barrett, ACS

Flowers and Decorations:

Mrs. James Keith, Woman's
Auxiliary, ASPE
Mrs. Donald Carnes, Woman's
Auxiliary, AIME

Sponsorship and Promotion:

**Sub-Committee from Birmingham
Chapter, ASPE:**

Gerald S. Odom
William B. Sanford
Lawrence Cooper

Ex-officio Committee Member:

Walter D. McCrary, ECofB,
Chairman, Engineering Council

SPONSORS

ALABAMA BY-PRODUCTS CORPORATION	FLY ASH ARRESTOR CORPORATION
AMERICAN CAST IRON PIPE COMPANY	J. M. FOSTER COMPANY
ASSOCIATED ENGINEERS	D. B. GOOCH ASSOCIATES, INC.
BIRMINGHAM BLUE PRINT COMPANY	GOSLIN-BIRMINGHAM MANUFACTURING COMPANY
BRICE BUILDING COMPANY, INC.	A. P. GREEN FIRE BRICK COMPANY
T. M. BURGIN DEMOLITION COMPANY	THE HARDY CORPORATION
BUTLER MANUFACTURING COMPANY	INGALLS IRON WORKS COMPANY
CHICAGO BRIDGE & IRON COMPANY	GEO. O. MABRY COMPANY
CONTINENTAL CONVEYOR & EQUIPMENT COMPANY	HARRY G. MOUAT COMPANY
E. C. COSTON COMPANY	NASHVILLE BRIDGE COMPANY
COWIN & COMPANY	THE RE-PRINT COMPANY
COWIN EQUIPMENT COMPANY	RUST ENGINEERING COMPANY
CRIM-THOMAS, INC.	SHOOK & FLETCHER SUPPLY COMPANY
H. N. DONAHOO CONTRACTING COMPANY	MURDOCK M. SNELLING, JR.
DONAHOO-RAST CONSTRUCTION COMPANY	SNOWDEN-WALTERS COMPANY
EBBERT & KIRKMAN COMPANY	SOUTHERN ELECTRIC STEEL COMPANY
JOS. W. ESHELMAN COMPANY	TRACTOR & EQUIPMENT COMPANY, INC.
JAMES A. EVANS	J. M. TULL METAL & SUPPLY COMPANY

ENGINEERING COUNCIL OF BIRMINGHAM AND JEFFERSON COUNTY

The Engineering Council of Birmingham and Jefferson County was an early outgrowth of the Engineers Club of Birmingham, which was formed in 1929. In 1931, the Birmingham Chamber of Commerce recommended that an Engineers Council be created as a public service body to advise on matters requiring special engineering knowledge. The Engineers Club organized such a council that same year, appointing a representative from each of the societies represented in the club.

During the past several years, steps have been taken that have strengthened the council organization. This work culminated in 1958 in an amendment to the council's constitution and by-laws saying: "The Chairman or President and the most immediate past Chairman of each engineering society shall automatically become members of the Engineering Council". This change has created a truly representative group for all engineers in the area, and benefits already are to be seen in the programs and attendance of the council's bi-monthly meetings.

The official objectives of the council are: "To advance the general welfare of the citizens in our vicinity through the available resources and creative ability of the engineering profession. To develop sound public policies, particularly regarding affairs in Birmingham and Jefferson County wherein the engineering profession can be helpful through the services of its members. To promote cooperation among the various branches of the engineering profession."